




Addington Fund

Helping Agriculture and Our
Rural Communities

SPONSORED BY



NFU Mutual
Charitable Trust

www.addingtonfund.org.uk

Addington Fund

Helping Agriculture and Our
Rural Communities

Contents

- Our History 4
- Collaboration with Farming Help Charities 5
- Our Work 6 - 7
- Structure and Governance 8
- How You Can Support Our Work 9
- Fundraising For Us 10
- Contact Us 12





Our History

The original Addington Fund was founded in 2000 by the late Reverend Canon Gerald Richard Addington and the Reverend Canon Sally Fogden, as a means to provide aid to East Anglian pig farmers whose lives and livelihoods were devastated when Classical Swine Fever (CSF) hit the region. Some of those farmers were resident in Richard Addington's parish in Suffolk.

In 2001, working with the Arthur Rank Centre (ARC) whose support was central to the effort, alongside many other charitable trusts and individual donors, we were an important part of the national response to the devastating outbreak of Foot and Mouth Disease (FMD). Between March 2001 and July 2002 we were able to distribute £10.3 million to more than 22,000 families directly impacted by FMD.

Since then we have been on hand to help farmers in England and Wales, whenever a natural disaster or a major disease outbreak has occurred.

In recognition of the contribution of the ARC, in 2003 we became the ARC Addington Fund until, in 2010, we once more reverted to the simpler Addington Fund.

Subsequently, and uniquely amongst the UK's farming charities, we identified the real need for housing support for tenant farmers who wished to retire but could not afford to leave their farms.

Our affordable housing scheme supports younger families, as well as the older generation who wish to work in agriculture and rural industries but cannot afford to live in the areas in which they work.



The Reverend Canon Gerald Richard Addington (24th June 1938 - 30th July 2002) who, with the Reverend Canon Sally Fogden MBE, founded the Addington Fund

Collaboration with Farming Help Charities

We are proud to be a member of Farming Help, an umbrella organisation of the UK's major farming charities.

Farming Help is supported by The Prince's Countryside Fund and comprises of the Addington Fund and the organisations listed below. It's structure allows these charities, each with their niche areas of operation, to work together collaboratively to provide comprehensive and optimal support when and where it is needed.



The Farming Community Network (FCN)

FCN is a voluntary organisation and charity who supports farming families within the farming community through difficult times. They have a network of 400 volunteers who can help in many ways from being someone to talk to, to acting as family mediators and even supporting farmers through legal issues. FCN run the Farming Help helpline from 7am - 11pm every day of the year.

Royal Agricultural Benevolent Institution (RABI)

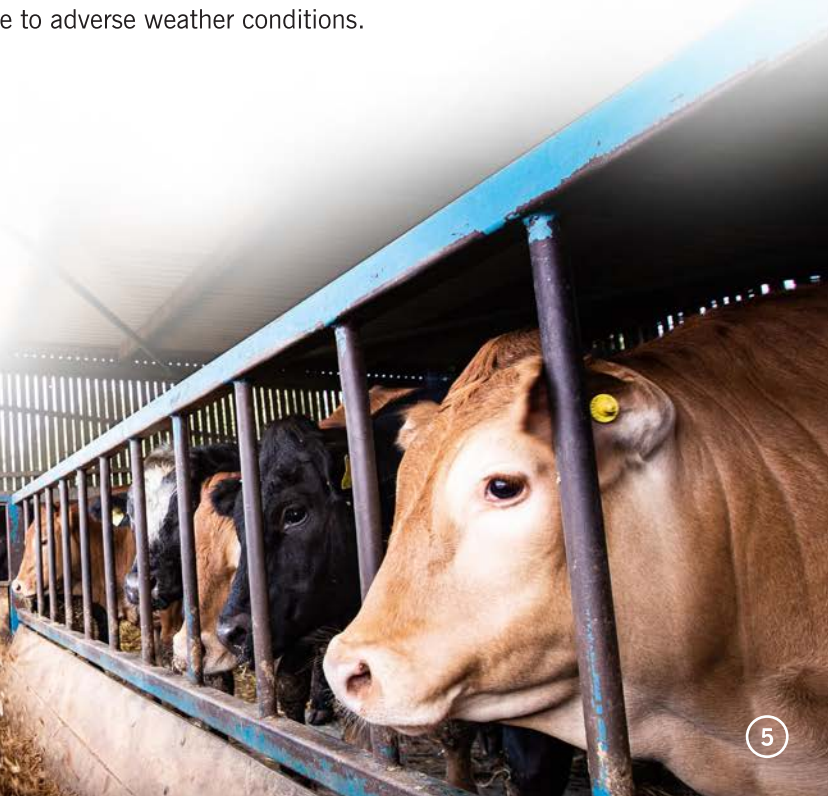
RABI is the UK's longest established farming charity. They provide grant help to farmers who have hit hard times and fund care home costs for elderly and retired farmers.

Royal Scotland Agricultural Benevolent Institution (RSABI)

RSABI offer a complete charitable farming service to farmers and crofters north of the border.

Forage Aid

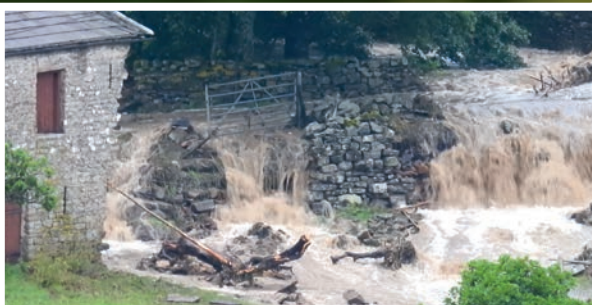
Forage Aid provides forage, donated by farmers in areas of plenty, to livestock farmers in need due to adverse weather conditions.



Our Work

Addington Fund's objectives are focussed on these key areas:

- Disaster relief for farmers and their families
- Retirement homes for qualifying tenant farmers
- Affordable housing for farming families working in rural areas
- Young Entrants Scheme
- Providing essential domestic goods to qualifying farm workers and retired farm workers
- Keeping our rural communities financially and socially sustainable



Disaster Relief

The Trustees' Discretionary Fund (TDF) has been established to provide support for farmers whose businesses are suffering due to disease epidemics and severe weather incidents. In the past, these have included outbreaks of Foot and Mouth Disease, Avian Flu and Classical Swine Fever, as well as prolonged flooding, drought, gale damage and severe snowfall. Always mindful of the well-being of those who look after livestock, as well as the animals themselves, we endeavour to provide immediate practical support, for example by sending animal feed from approved suppliers directly to those impacted. We also provide hay and straw through an approved partner as part of our disaster relief program, when animal welfare is at stake.



Retirement Homes

Our Retirement Homes scheme buys houses for farmers who find themselves leaving their farm perhaps because of ill-health, retirement or non-viability of the farm. This scheme recognises the contribution they have made to the rural community and offers affordable, nearby alternative accommodation. We may give priority to retiring tenant farmers to benefit from this scheme, because their land and farmhouse do not belong to them and therefore cannot be sold to raise funds to invest in somewhere else to live. Once an application has been approved in principle, applicants play a part in choosing their new forever home that will place them close to or within the community they would otherwise have been obliged to leave.

Some of our tenants are able to partially fund the purchase of their retirement homes. Shared equity is encouraged in such circumstances and enables the tenant to benefit from a proportionally lowered rent and any associated equity when the property is sold.



Affordable Housing

The cost of houses in many rural areas can be beyond the reach of many people who wish to work in agriculture and need to live in the surrounding rural community. Our Affordable Rural Housing Scheme (ARHS) aims to provide homes for rent, usually at less than full market cost, for individuals and families for whom all other housing options have been explored and exhausted.

Much of our ARHS portfolio comprises of properties either gifted to us outright, purchased directly by us, or built by us on plots donated by generous benefactors. Our ARHS programme is open only to applicants who work in the agriculture and wider rural economy, and Addington always retains 100% ownership of these homes.

Young Entrants Scheme

Our growing reputation as one of the most effective farming charities is attracting the interest of potential benefactors with whom we are in discussion about not only residential property, but also agricultural land and small farms. We are therefore in the process of creating a Young Entrants Scheme with the aim of giving suitably qualified and energetic young people a chance to farm in their own right. Such rare opportunities to take a first step on the farming ladder will be given to ambitious, first-generation farmers who have a different approach to running businesses and who, we believe, have the potential to make a major contribution to agriculture. The scheme will be run with national partners including banks, land agents and food retailers, in order to share knowledge and increase the potential for profitability and more sustainable wider rural communities.

Help for Farmworkers

Through the George Stephens Trust Fund (GSTF) we are able to offer grants to low-income or retired farmworkers to help purchase domestic 'white goods', bathroom fittings, or essential furniture. This programme is currently available in England.





Structure and Governance

Our work is carried out by a widely experienced team of professionals based at our head office at Barford in Warwickshire. Our Chief Executive is supported by the Deputy Director, the Project Manager, the Marketing and Events Manager and the Operations and Marketing Assistant.

The full-time professional team is guided and overseen by the Board of Trustees. Trustees are selected for their professional skills and experience and serve defined terms of office. The Board is itself supported by sub-committees, including Housing, Marketing, and Governance and Finance, each of which is chaired by a full Board Member and reports to the Board Chairman. External professional support is also sought as required by agreement of the Board.

None of the Trustees' positions are remunerated, although exceptional travel or other expenses can be covered from time to time.

Subsidised rental income from our growing portfolio of let properties creates a sustainable income stream which covers a very high proportion of our running costs. This means that nearly every penny from our fund-raising efforts and sponsorship and from occasional government support, goes directly towards our charitable objectives. At present our work is limited to supporting farmers in England and Wales.

The Addington Fund is a registered charity with the Charity Commission for England and Wales and is also registered with the Fundraising Regulator. Registered charity number 1097092.

Full details of our current staff and trustees can be found on our website at www.addingtonfund.org.uk





How You Can Support Our Work



 easyfundraising.org.uk
feel good shopping


You shop. Amazon gives.



Donating Property, Building and Agricultural Land

The work of the Addington Fund is increasingly attracting the interest of land and rural property owners who wish to help keep our agriculture and rural industries and communities vibrant and sustainable.

Our work has been enhanced hugely by gifts of existing residential property and also building plots which we are able to develop, in full consultation with the donor, for our housing schemes. These have been both one-off plots, and the whole or parts of the affordable housing elements of larger scale developments. We are available to discuss ways in which our experience can enhance planning applications and optimise the charitable yield from all manners of opportunities.

We are also happy to discuss with potential donors gifts of whole or part farms, with or without buildings, for inclusion in our Young Entrants Scheme.

Online Shopping

If you shop online, please consider using sites such as easyfundraising.org or smile.amazon.co.uk. Just register, choose us as your charity and we receive a percentage of what you spend, with no extra cost to you!

Make a Donation

A simple yet effective way you can support our work is by making a donation. You can either donate online or call the office to donate via card payment, send a cheque or you can text donate via our text giving number. Alternatively, you can fill out the Gift Aid form on the back of this booklet and send it back to us. One off or monthly donations are welcome.

To donate or for more information visit www.addingtonfund.org.uk/donate





Fundraising For Us



We would love for you to get involved and fundraise for us, so for help with these or any other ideas, please contact our Events Manager. If fundraising activities are not for you, there is a simple donation form, opposite, that you can complete and return to us.

Our regular supporters have used a wide and innovative range of ideas to raise money for us and to promote our work. These include, but of course need not be limited to:

- **Buying Addington Christmas cards through our website or at events**
- **Fundraising dinners and balls**
- **Hosting breakfast meetings, coffee mornings and cake bakes**
- **BBQs and barn dances**
- **Collections at church services: Lammas, Advent, Carol Services, Rogation Sundays, Harvest Festivals and Harvest suppers**
- **Sponsored rides, runs, swims and all kinds of physical challenges**
- **Auction of promises**
- **Treasure hunts**
- **Bingo or quiz nights**

For more ways of how you can help, visit our website addingtonfund.org.uk/how-you-can-help

“I would like to support the work
of the Addington Fund”



Gift Aid

Please treat the enclosed gift as a Gift Aid donation.

For every £1 you give we can reclaim an additional 25p in tax.

I am a UK taxpayer and understand that if I pay less Income Tax and/or Capital Gains Tax in the current tax year than the amount of Gift Aid claimed on all my donations, it is my responsibility to pay the difference.

Please tick here if you are able to Gift Aid your donation.

I would like to make a donation of to the Addington Fund

Title: Name:

Address:

Postcode:

Signature: Date:



Please return to:

Addington Fund,
9 Barford Exchange,
Wellesbourne Road, Barford,
Warwickshire
CV35 8AQ

Contact us

Addington Fund
9, Barford Exchange
Wellesbourne Road
Barford
Warwickshire
CV35 8AQ

Find us on social media

 @AddingtonFund

 @addingtonfund

 addingtonfund

 Addington Fund

Registered Charity Number 1097092

Telephone: 01926 620135

Email: enquiries@addingtonfund.org.uk



AddingtonFund

www.addingtonfund.org.uk

SPONSORED BY



NFU Mutual
Charitable Trust

